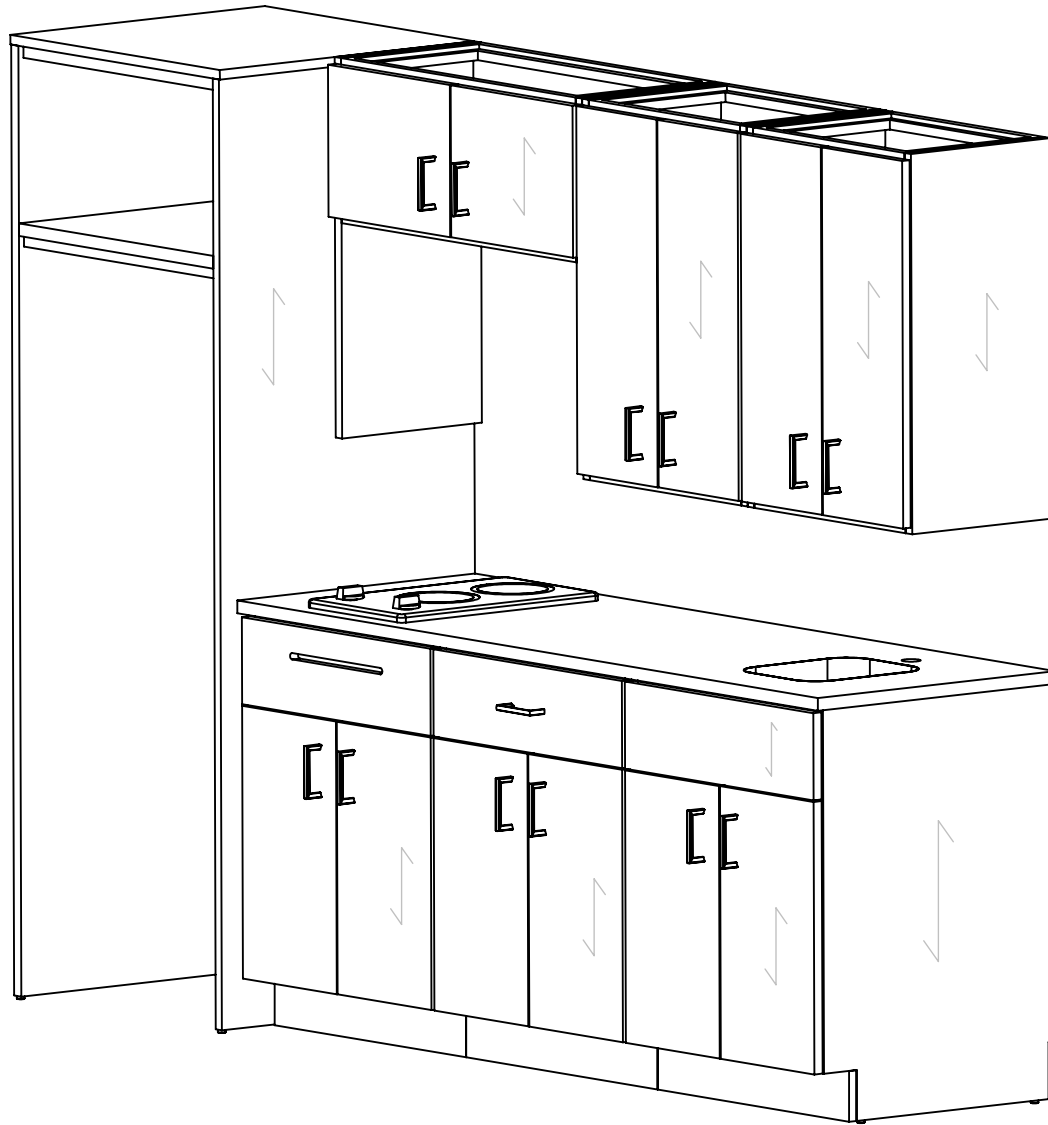


1

2



A

A

B

B

**Overall:**  
98"W x 25 1/2"D x 76"H

**MATERIALS:**

- HP Laminat PB-3/4
- .018 Edge Tape
- Bottom Nail Glide
- Plywood 1/2" Drawer Box
- 14" HD-Full Extension Drawer Guide
- Concealed Euro Hinge
- Metro 96mm CC Matte Black Pull 4111-1055-P

**COMMENTS:**

- Overall: 98"W x 25 1/2"D x 76"H
- Color: Asian Night - 7949 - Outside
- Color - Matt Black - 1595-60 - Inside
- Note: Dimensional Tolerance +/- 1/16"

**TITLE:** AHK 8170XXYY KC98SR KIT - 8170M6 - 98" Ktchn Cab R-Sink  
**REVISION DATE:**

NOTE: DESIGN AND DRAWINGS ARE PROPERTY OF DICKSON FURNITURE MANUFACTURERS LLC AND MAY NOT BE DUPLICATED OR REPRODUCED WITHOUT THE EXPRESS WRITTEN CONSENT OF DICKSON FURNITURE MANUFACTURERS LLC

QUANTITY	<b>00</b>
REV	<b>A</b>
DIMENSIONS ARE IN INCHES	

**DICKSON**  
FURNITURE MANUFACTURERS

**SCALE: 1:15**

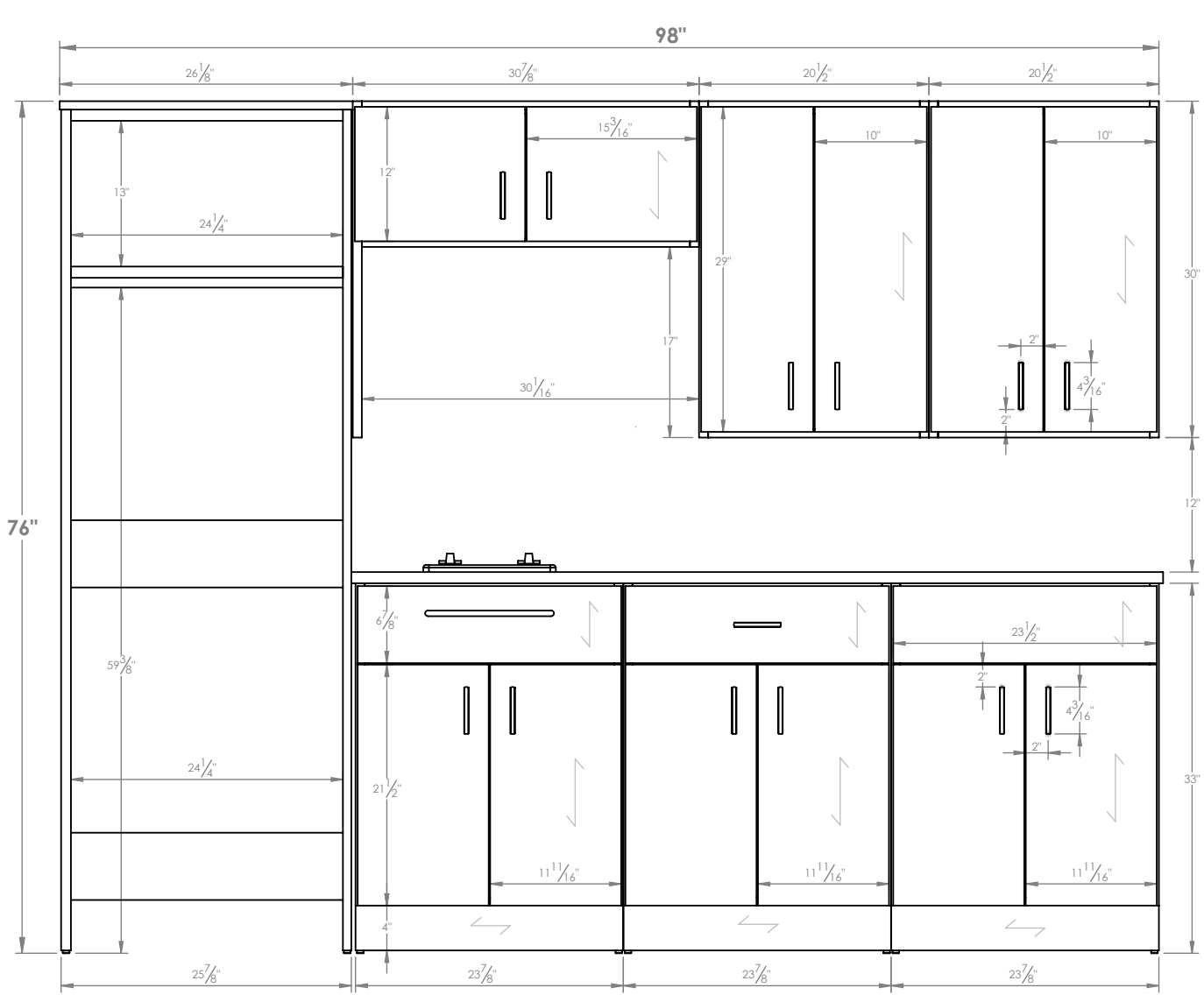
**SHEET 1 OF 5**

1

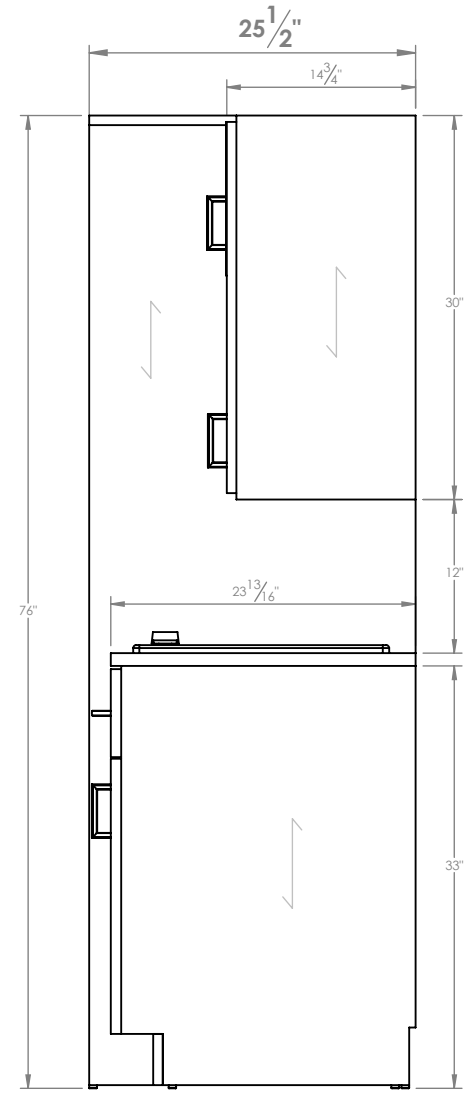
2

1

2



**FRONT ELEVATION**



**SIDE VIEW**

**MATERIALS:**

- HP-Laminate PB-3/4
- .018 Edge Tape
- Bottom Nail Glide
- Plywood 1/2" Drawer Box
- 14" HD-Full Extension Drawer Guide
- Concealed Euro Hinge
- Metro 96mm CC Matte Black Pull 4111-1055-P

**COMMENTS:**

- Overall: 98"W x 25 1/2"D x 76"H
- Color: Asian Night - 7949 - Outside
- Color - Matt Black - 1595-60 - Inside
- Note: Dimensional Tolerance +/- 1/16"

**TITLE:** AHK 8170XXYY KC98SR KIT - 8170M6 - 98" Ktchn Cab R-Sink  
**REVISION DATE:**

NOTE: DESIGN AND DRAWINGS ARE PROPERTY OF DICKSON FURNITURE MANUFACTURERS LLC AND MAY NOT BE DUPLICATED OR REPRODUCED WITHOUT THE EXPRESS WRITTEN CONSENT OF DICKSON FURNITURE MANUFACTURERS LLC

<b>DICKSON</b> FURNITURE MANUFACTURERS	
QUANTITY <b>00</b>	<b>SCALE: 1:15</b> <b>SHEET 2 OF 5</b>
REV <b>A</b> DIMENSIONS ARE IN INCHES	

1

2



# IMPORTANT INFORMATION

-AHK 8170XXYY KC98SR KIT - 8170M6 - 98" Ktchn Cab R-Sink-



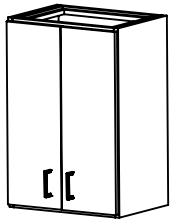
Lift parts with at least 2 people

## \*RECOMMENDATIONS:

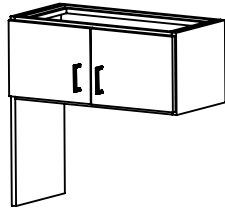
- Read instructions before installing
- Keep area clean
- Do not drag the parts
- Do not forget to wear PPE

## \*PERSONAL PROTECTION EQUIPMENT (PPE)

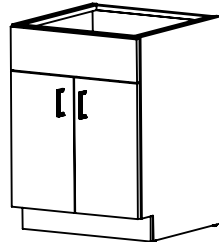
- Hand Protection
- Eye Protection
- Waist Support Belt



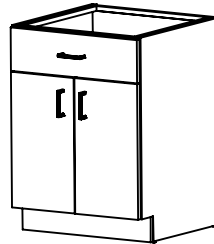
Upper Cabinet  
30"x20 1/2"



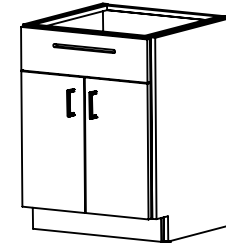
Upper Cabinet  
13"x30 7/8"



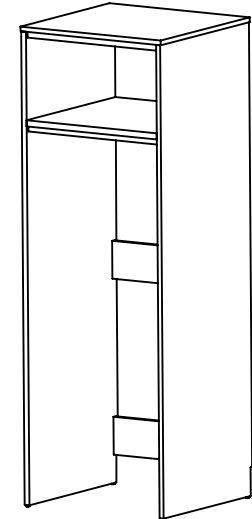
Sink Cabinet



Double Door Cabinet



Cooktop Cabinet



Closet

## \*Tools:



Water level



Measuring Tape



Pencil



Drill



Screw

## \*Hardware:



Shims

# DICKSON

FURNITURE MANUFACTURERS

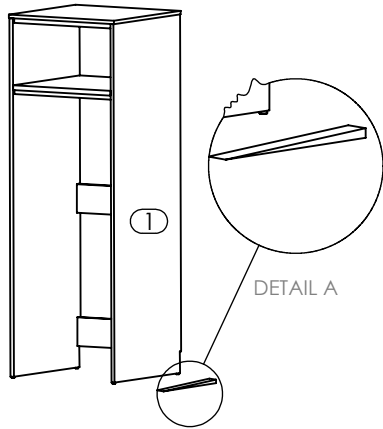
# STEP #1

# ASSEMBLY INSTRUCTIONS

-AHK 8170XXYY KC98SR KIT - 8170M6 - 98" Ktchn Cab R-Sink-

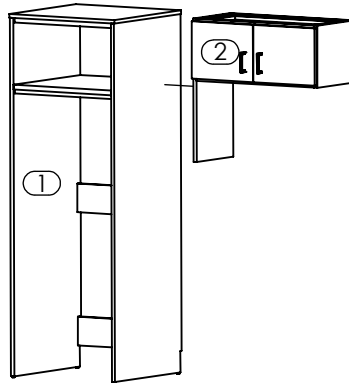
Note: Assembly can be done with 2 people.

**1**



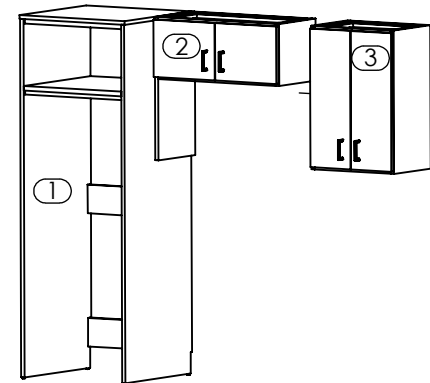
Level the Closet(1) with shims. Verify by using Water Level. (Reference Detail A).

**2**



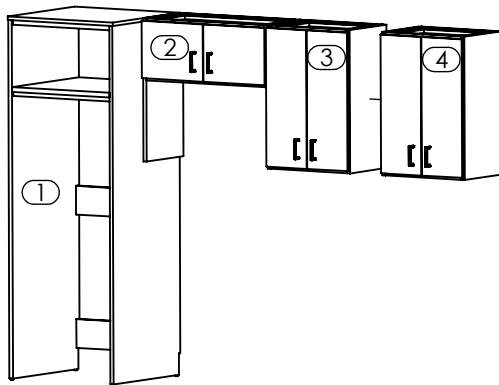
Align Upper Cabinet 13"x30 7/8"(2) with closet (1) flush from the Back and attach to wall.

**3**



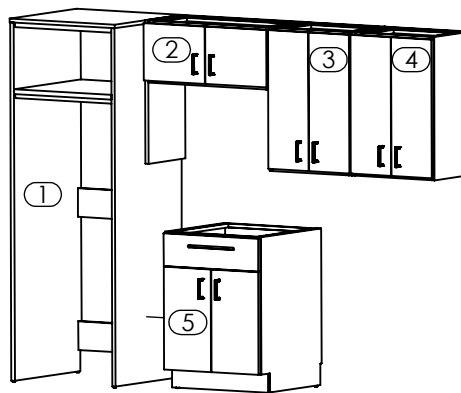
Align Upper Cabinet 30"x20 1/2"(3) with Upper Cabinet 13"x30 7/8" (2) flush from the Top and attach to wall.

**4**



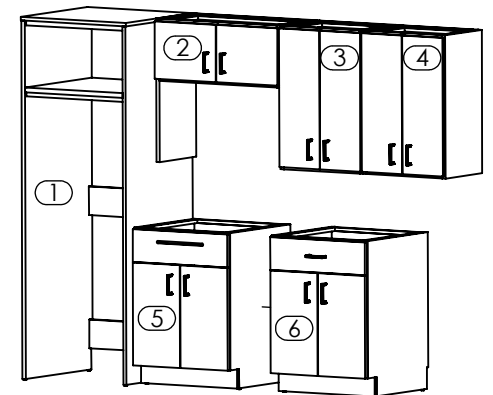
Align Upper Cabinet 30"x20 1/2" (4) with Upper Cabinet 30"x20 1/2" (3) flush from the Top and attach to wall.

**5**



Align Cooktop Cabinet (5) with Closet (1) flush from the Back and level cabinet with shims.

**6**



Align Double Door Cabinet (6) with Cooktop Cabinet (5) flush from the Back and level cabinet with shims.

**DICKSON**  
FURNITURE MANUFACTURERS

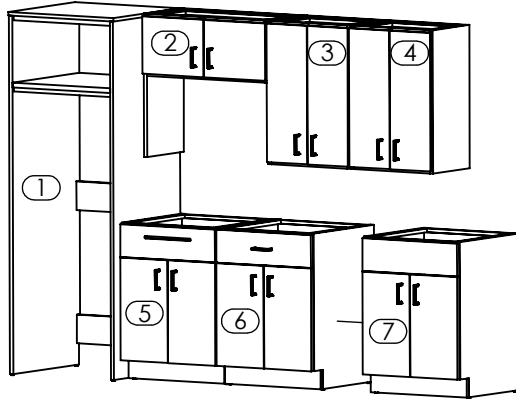
# STEP #2

Note: Assembly can be done with 2 people.

# ASSEMBLY INSTRUCTIONS

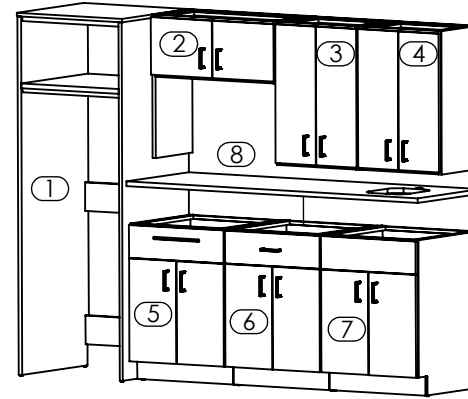
-AHK 8170XXYY KC98SR KIT - 8170M6 - 98" Ktchn Cab R-Sink-

## 7



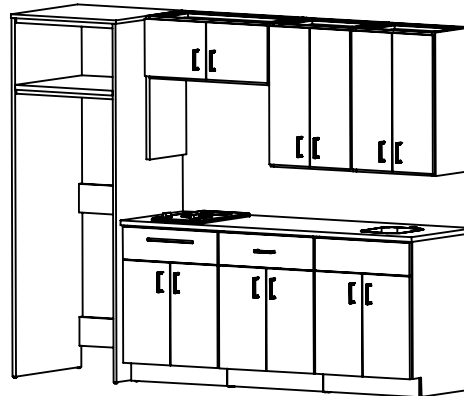
Align Sink Cabinet (7) with Double Door Cabinet (6) flush from the Back and level cabinet with shims.

## 8



Place Counter Top (8) on Top of Base Cabinets, align flush from the Back and attach with screws.

## 9



98" Ktchn Cab R-Sink completely assembled