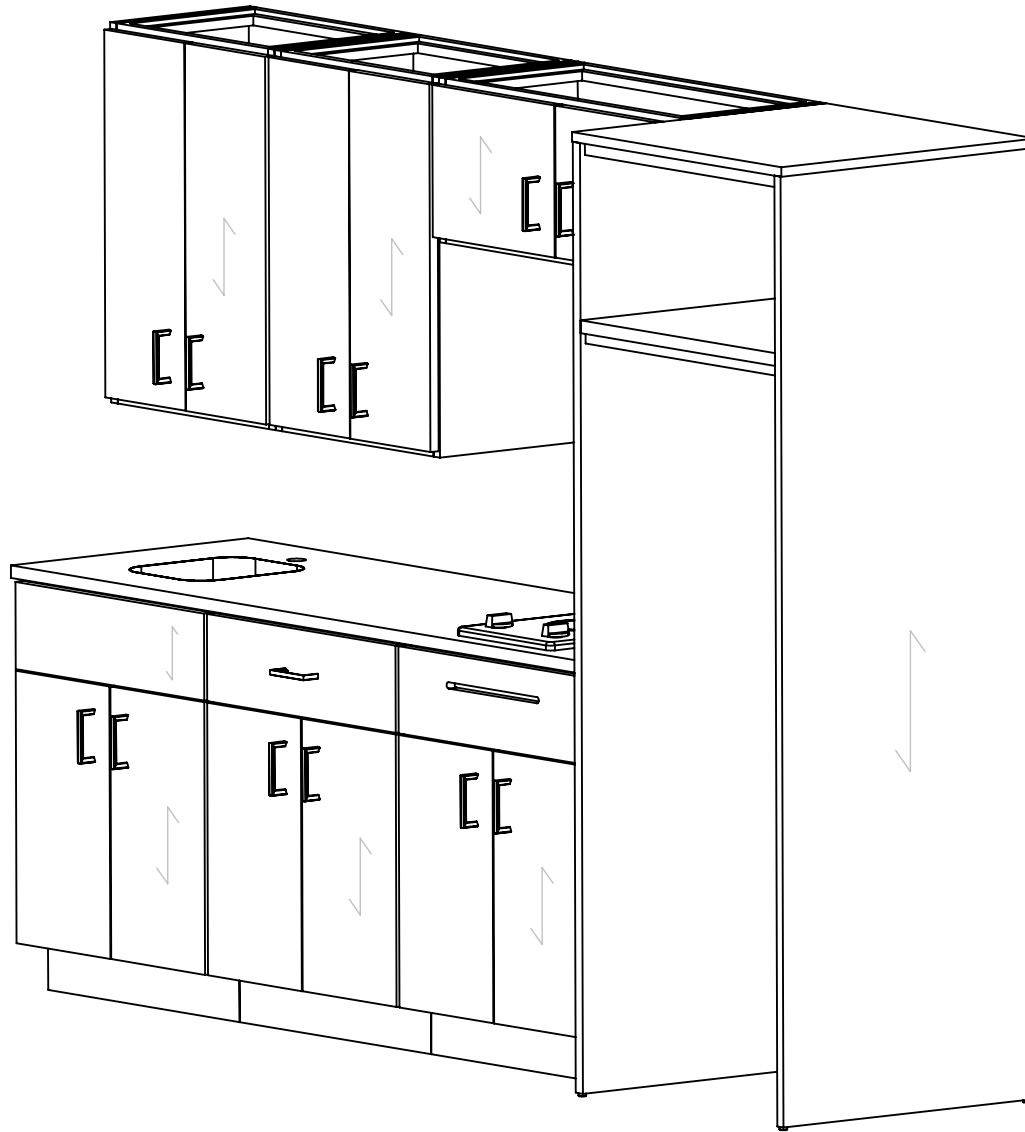


1

2



**Overall:**  
98"W x 25 1/2"D x 76"H

- MATERIALS:**
- HP Laminat PB-3/4
  - .018 Edge Tape
  - Bottom Nail Glide
  - Plywood 1/2" Drawer Box
  - 14" HD-Full Extension Drawer Guide
  - Concealed Euro Hinge
  - Metro 96mm CC Matte Black Pull 4111-1055-P

- COMMENTS:**
- Overall: 98"W x 25 1/2"D x 76"H
  - Color: Asian Night - 7949 - Outside
  - Color - Matt Black - 1595-60 - Inside
  - Note: Dimensional Tolerance +/- 1/16"

**TITLE:** AHK 8170XXYY KC98SL KIT - 8170M6 - 98" Ktchn Cab L-Sink

**REVISION DATE:**

NOTE: DESIGN AND DRAWINGS ARE PROPERTY OF DICKSON FURNITURE MANUFACTURERS LLC AND MAY NOT BE DUPLICATED OR REPRODUCED WITHOUT THE EXPRESS WRITTEN CONSENT OF DICKSON FURNITURE MANUFACTURERS LLC

QUANTITY

00

REV

A

DIMENSIONS ARE IN INCHES

**DICKSON**  
FURNITURE MANUFACTURERS

SCALE: 1:15

SHEET 1 OF 5

1

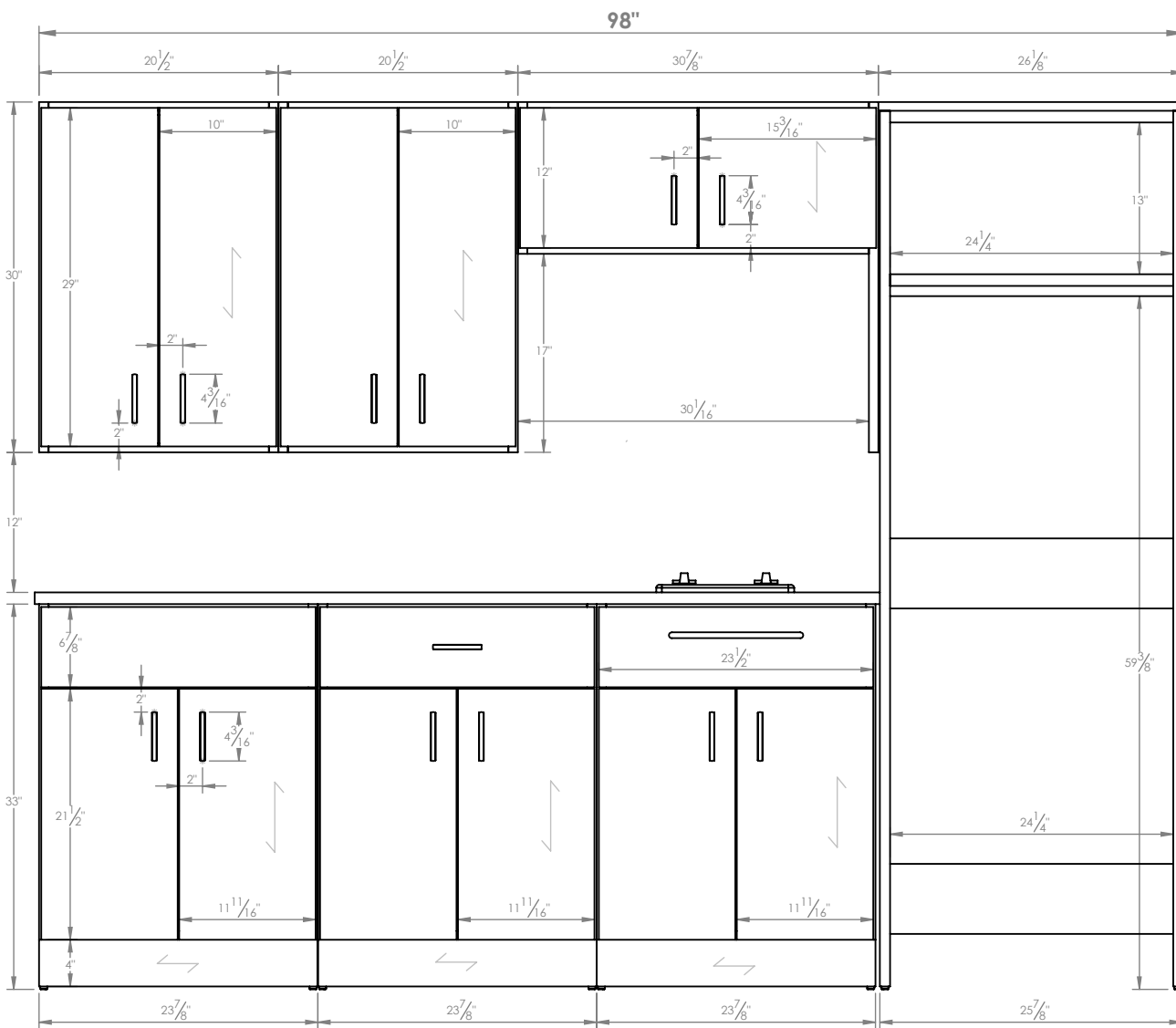
2

A

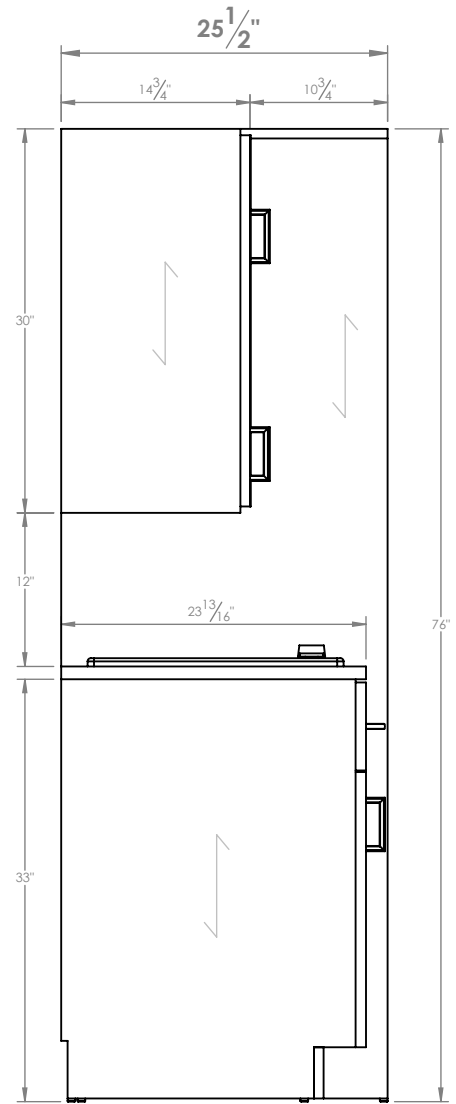
A

B

B



FRONT ELEVATION



SIDE VIEW

- MATERIALS:**
- HP-Laminate PB-3/4
  - .018 Edge Tape
  - Bottom Nail Glide
  - Plywood 1/2" Drawer Box
  - 14" HD-Full Extension Drawer Guide
  - Concealed Euro Hinge
  - Metro 96mm CC Matte Black Pull 4111-1055-P

- COMMENTS:**
- Overall: 98"W x 25 1/2"D x 76"H
  - Color: Asian Night - 7949 - Outside
  - Color - Matt Black - 1595-60 - Inside
  - Note: Dimensional Tolerance +/- 1/16"

**TITLE:** AHK 8170XXYY KC98SL KIT - 8170M6 - 98" Ktchn Cab L-Sink  
**REVISION DATE:**  
 NOTE: DESIGN AND DRAWINGS ARE PROPERTY OF DICKSON FURNITURE MANUFACTURERS LLC AND MAY NOT BE DUPLICATED OR REPRODUCED WITHOUT THE EXPRESS WRITTEN CONSENT OF DICKSON FURNITURE MANUFACTURERS LLC

<b>DICKSON</b> FURNITURE MANUFACTURERS	QUANTITY <b>00</b>
	REV <b>A</b>
SCALE: 1:15	
DIMENSIONS ARE IN INCHES	
SHEET 2 OF 5	



# IMPORTANT INFORMATION

-AHK 8170XXYY KC98SL KIT - 8170M6 - 98" Ktchn Cab L-Sink-



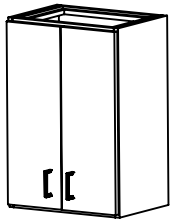
Lift parts with at least 2 people

## \*RECOMMENDATIONS:

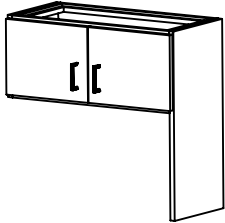
- Read instructions before installing
- Keep area clean
- Do not drag the parts
- Do not forget to wear PPE

## \*PERSONAL PROTECTION EQUIPMENT (PPE)

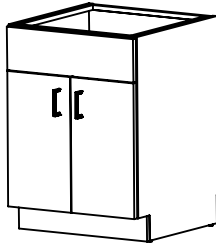
- Hand Protection
- Eye Protection
- Waist Support Belt



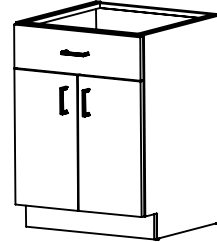
Upper Cabinet  
30"x20 1/2"



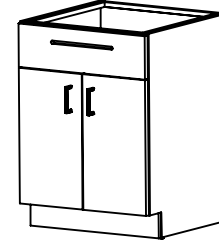
Upper Cabinet  
13"x30 7/8"



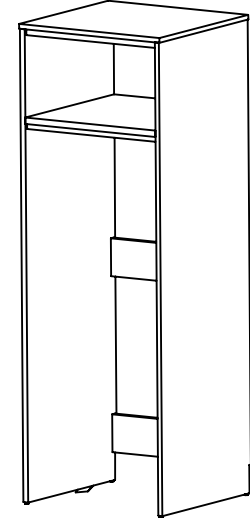
Sink Cabinet



Double Door Cabinet



Cooktop Cabinet



Closet

## \*Tools:



Water level



Measuring Tape



Pencil



Drill

## \*Hardware:



Screw



Shims

# DICKSON

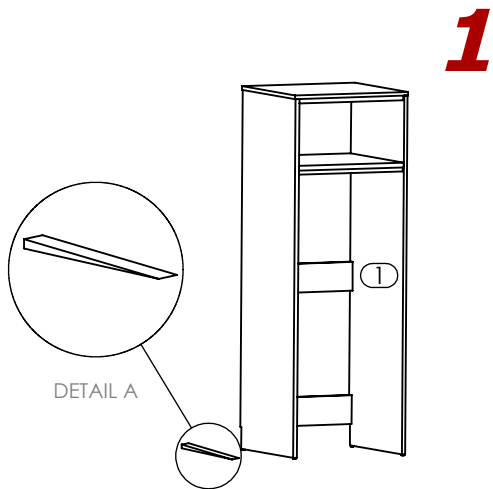
FURNITURE MANUFACTURERS

# STEP #1

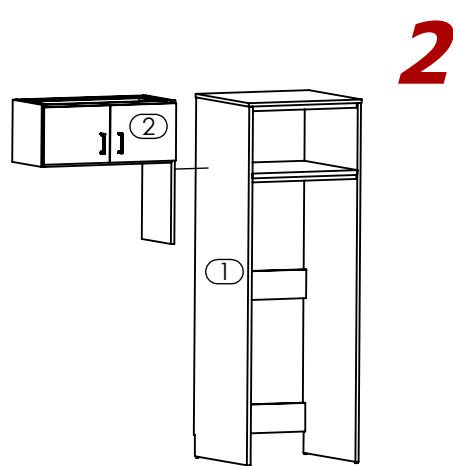
# ASSEMBLY INSTRUCTIONS

- AHK 8170XXYY KC98SL KIT - 8170M6 - 98" Ktchn Cab L-Sink -

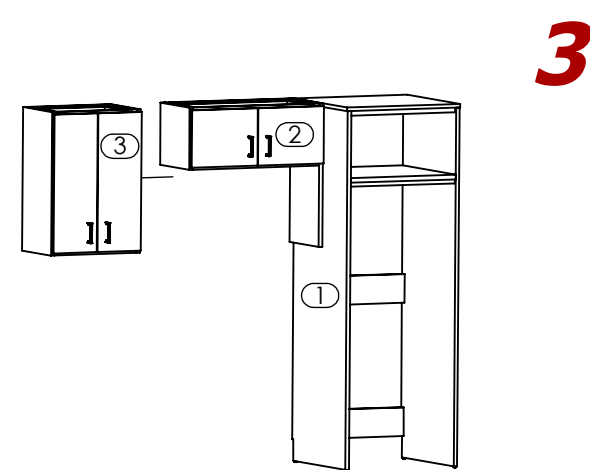
Note: Assembly can be done with 2 people.



Level the Closet(1) with shims. Verify by using Water Level. (Reference Detail A).



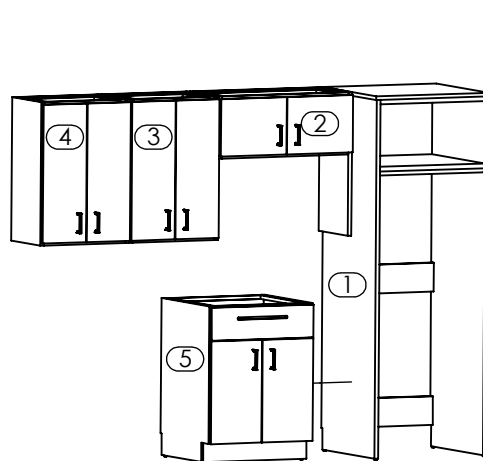
Align Upper Cabinet 13"x30 7/8"(2) with closet (1) flush from the Back and attach to wall.



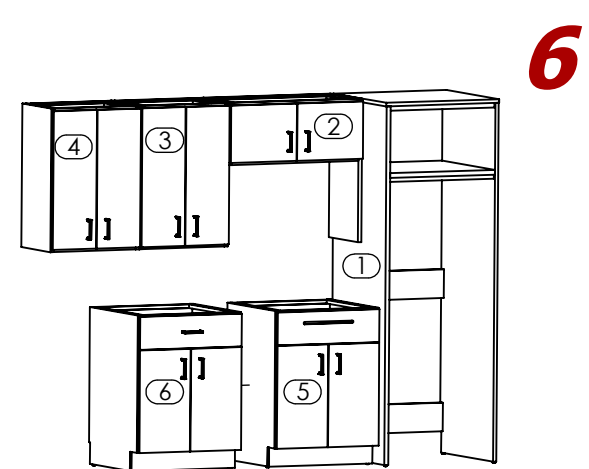
Align Upper Cabinet 30"x20 1/2"(3) with Upper Cabinet 13"x30 7/8" (2) flush from the Top and attach to wall.



Align Upper Cabinet 30"x20 1/2" (4) with Upper Cabinet 30"x20 1/2" (3) flush from the Top and attach to wall.



Align Cooktop Cabinet (5) with Closet (1) flush from the Back and level cabinet with shims.



Align Double Door Cabinet (6) with Cooktop Cabinet (5) flush from the Back and level cabinet with shims.

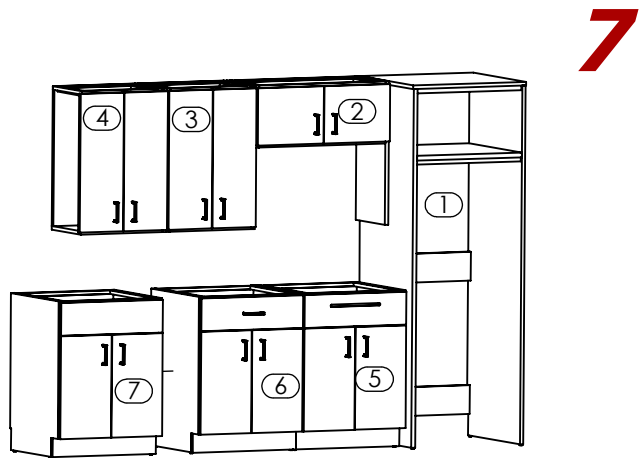
**DICKSON**  
FURNITURE MANUFACTURERS

# STEP #2

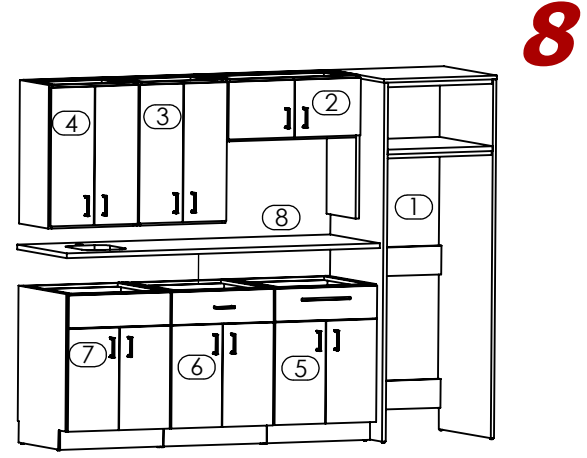
# ASSEMBLY INSTRUCTIONS

- AHK 8170XXYY KC98SL KIT - 8170M6 - 98" Ktchn Cab L-Sink -

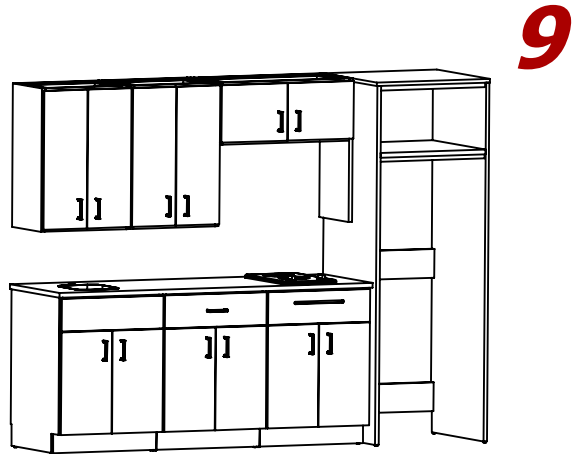
Note: Assembly can be done with 2 people.



Align Sink Cabinet (7) with Double Door Cabinet (6) flush from the Back and level cabinet with shims.



Place Counter Top (8) on Top of Base Cabinets, align flush from the Back and attach with screws.



98" Kithn Cab L-Sink completely assembled